

PROJECT EXAMPLES AND APPLICATIONS

3D DATA CAPTURE

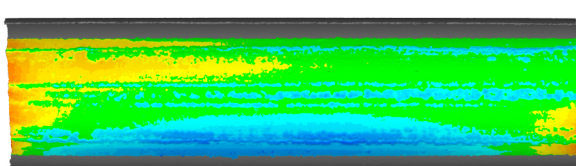
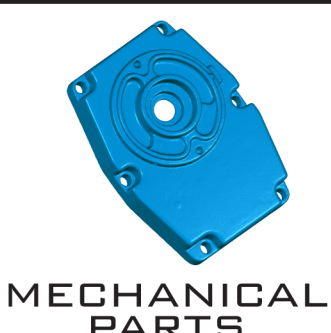


3D MODELING

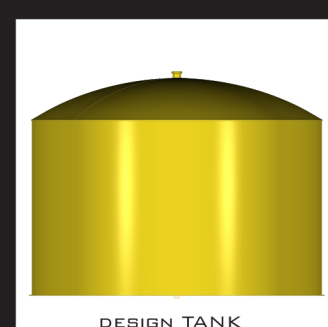
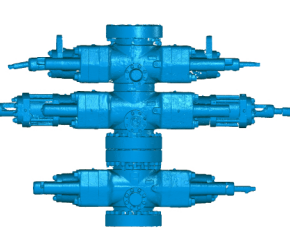
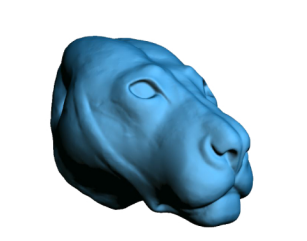
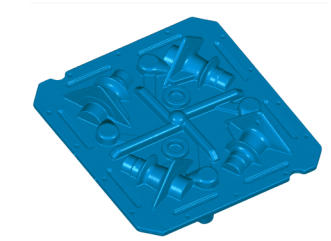
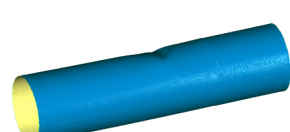
THE STRUCTURED LIGHT SCANNING SYSTEM

APPLICATIONS FOR 3D DATA CAPTURE ARE AS FOLLOWS:

- DOCUMENTATION
- MEASUREMENTS
- VISUALIZATION
- DUPLICATION
- STRUCTURAL/FEA ANALYSIS
- TEMPLATE FOR NEW MODEL
- 3D PRINTING & MORE!!

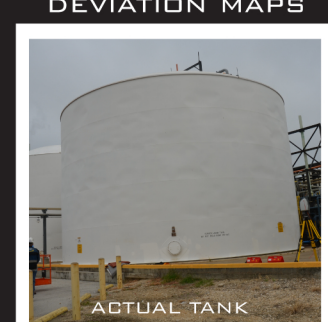


STRUCTURED LIGHT 3D SCANNING PROJECT EXAMPLES

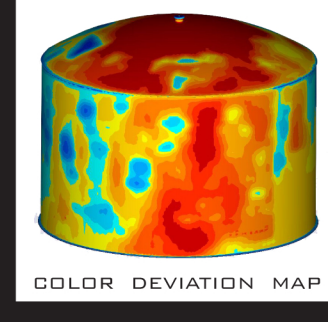


3D LASER SCANNING PROJECT EXAMPLES

THIS EXAMPLE SHOWS A TANK WITH DEFORMATION.



TANK MODELED FROM DESIGN DATA AND COMPARED TO 3D DATA COLLECTED FROM LASER SCAN.



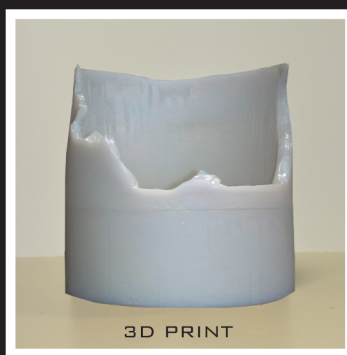
COLOR MAP REPRESENTS SURFACE DEVIATION BETWEEN DESIGN TANK AND ACTUAL TANK.

DATA WAS ALSO USED FOR FINITE ELEMENT ANALYSIS.

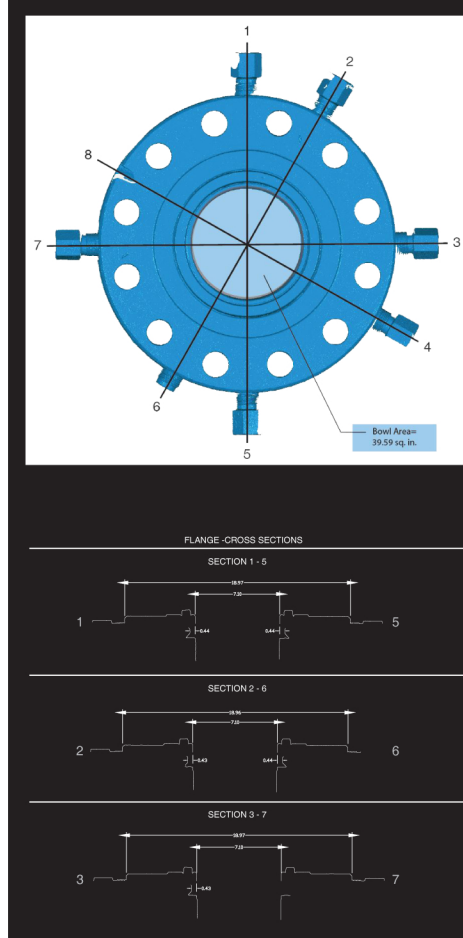


THIS PIPE WAS SCANNED FOR ANALYSIS AND 3D PRINT DUPLICATION.

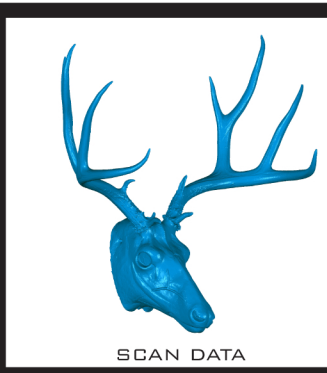
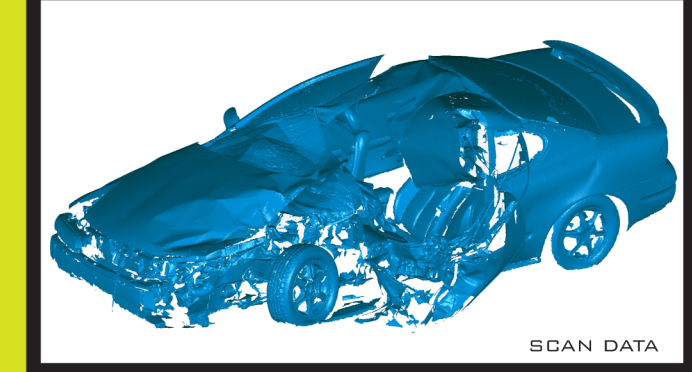
3D SCANNING & 3D PRINTING



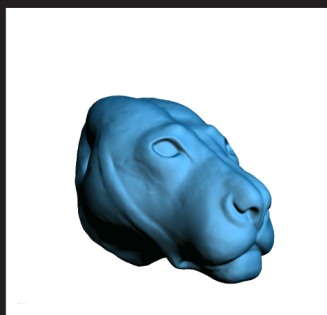
THE 3D PRINTED MODEL WAS TRANSPORTED BY PLANE TO A REMOTE MEETING SITE WHERE THEY WERE ABLE TO PASS THE PART AROUND THE TABLE & DISCUSS THE FAILURE.



3D SCANNING FOR CRUSH ANALYSIS AND DOCUMENTATION



3D SCANNING FOR SCULPTURE



THIS MULE DEER AND LION HEAD ARE EXAMPLES OF SCULPTURAL OBJECTS THAT CAN BE SCANNED FOR DOCUMENTATION, DUPLICATION, MEASUREMENTS, ETC.

THIS TYPE OF DATA IS FROM THE STRUCTURED LIGHT SCANNING SYSTEM

ACCURACY IS 0.001"